

SECIL **TEK**

REABILITA

REPAIR AND RENOVATION

CAL AC



REABILITA

REPAIR AND RENOVATION

SCHEMES WITH REABILITA CAL AC

REABILITA CAL AC and **REABILITA CAL AC FINO** are finishes in general renovation schemes that include various products from the **REABILITA** range based on Natural Hydraulic Lime. They can also be applied to other coating systems, including solutions with cork mortars from **ECOCORK**.

REABILITA CAL AC SANDED / EVEN



- ① Support
- ② REABILITA CAL CS + REABILITA REDE AR 160
- ③ REABILITA CAL RB
- ④ **REABILITA CAL AC** + ISOVIT REDE 160 + **REABILITA CAL AC**
- ⑤ B-REPARA PROTEÇÃO AD 40 (Water-repellant protection)

REABILITA CAL AC SMOOTH



- ① Support
- ② REABILITA CAL CS + REABILITA REDE AR 160
- ③ REABILITA CAL RB
- ④ **REABILITA CAL AC** + ISOVIT REDE 160 + **REABILITA CAL AC**
- ⑤ **REABILITA CAL AC FINO**
- ⑥ B-REPARA PROTEÇÃO AD 40 (Water-repellant protection)

REABILITA

REPAIR AND RENOVATION

PRODUCTS

This breathable finishing system can be used in the conservation and repair of buildings, especially when it is intended to recover the exterior coating of old buildings' façades, which require high levels of permeability to water vapour, characteristic of mortars formulated based on Natural Hydraulic Lime.

BREATHABLE FINISHES

PROTECTION

REABILITA CAL AC

REABILITA CAL AC FINO

B-REPARA AD 40



AND/OR



+



Natural Hydraulic Lime finishing mortar, thin and sandy or even finish for inside and out.

Smooth finishing mortar, for very reduced thicknesses, based on Natural Hydraulic Lime to obtain smooth finishes inside and out.

Solvent-based water-repellant, water-leaching polysiloxane for porous surfaces, soils, walls, facades, tiles and wood.

- MADE EXCLUSIVELY FROM NATURAL HYDRAULIC LIME (NHL)
- COMPLETE PHYSICAL AND CHEMICAL COMPATIBILITY WITH ANTIQUE MASONRY
- ALLOWS SMOOTH, EVEN AND FINE-SANDED FINISHES
- HIGHLY WATER-VAPOUR PERMEABLE
- SALT-RESISTANT
- FREE FROM CALCIUM SULPHATE
- EXCELLENT WORKABILITY

- PROTECTS AGAINST DAMP
- HIGHLY DURABLE
- MAINTAINS THE SURFACE'S BREATHABILITY
- PREVENTS WATER ABSORPTION AND SOLUBLE POLLUTANTS BY CAPILLARY ACTION
- DOES NOT FORM A SKIN

USE: Interior/Exterior
PACKAGING: 25kg bag
COVERAGE: 1.2 kg/m²/mm
COLOUR: Range of colours

USE: Interior/Exterior
PACKAGING: 18kg bag
COVERAGE: .0,75 kg/m²/mm
COLOUR: Range of colours

USE: Interior/Exterior
PACKAGING: 5 litre can
COVERAGE: 2 to 8 l/m²/hand-painted
COLOUR: Colourless

REABILITA CAL AC COLOUR CATALOGUE

AC01



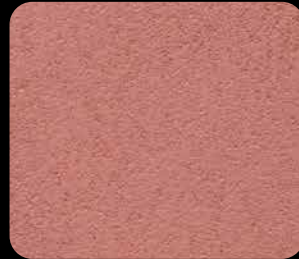
AC02



AC03



AC04



AC05



AC06 *



AC07 *



AC08 *



AC09 *



AC10 *



AC11



AC12



AC13

Colours were applied using **REABILITA CAL AC FINO**.
Application conditions as well as the natural materials used in the development of these colours may cause tonal variations relative to the samples presented in these colour cards. It is recommended you check the colour on site using a sample.

* Exclusive colours in CAL AC

REABILITA CAL AC TEXTURES

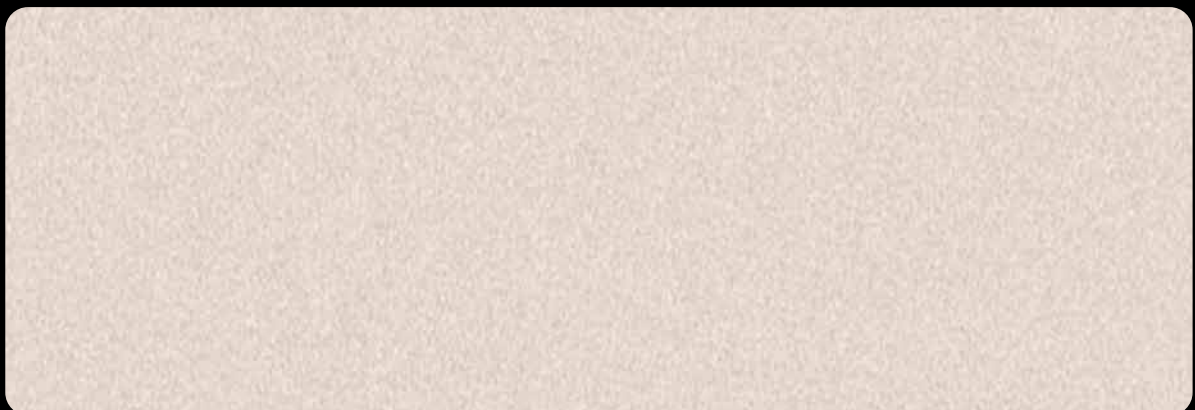
REABILITA CAL AC allows for fine-sanded finishes. Using a smoothing technique, you can achieve even textures. In turn, **REABILITA CAL AC FINO** is conceived to promote a smooth texture.



REABILITA CAL AC
SANDED



REABILITA CAL AC
EVEN



REABILITA CAL AC FINO
SMOOTH



SECILTEK
Apartado 2, 2406-909 Maceira LRA
PORTUGAL

Tel.: +351 244 770 220
Fax.: +351 244 777 997

comercial.seciltek@secil.pt
secil.pt